

Fiesta[®] Catenary Top

Catenary Fastening Assembly

INSTRUCTION SUPPLEMENT

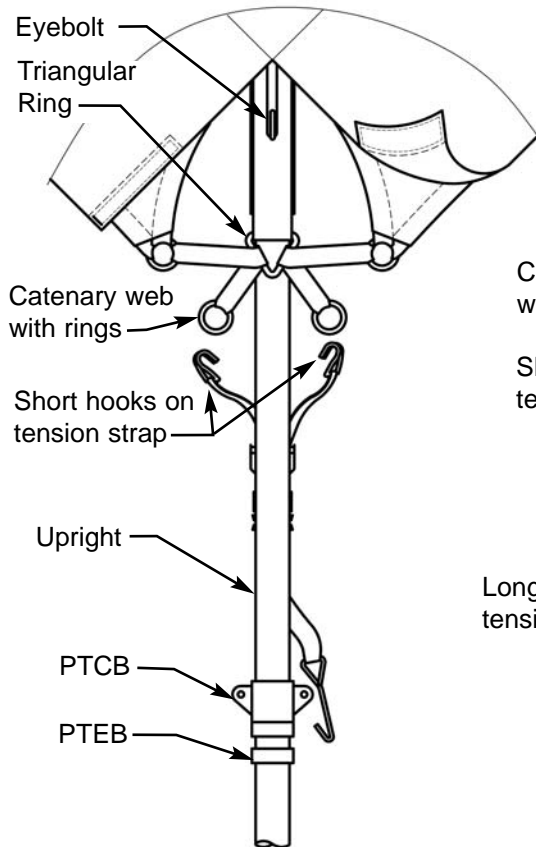


FIGURE 1
OUTSIDE VIEW

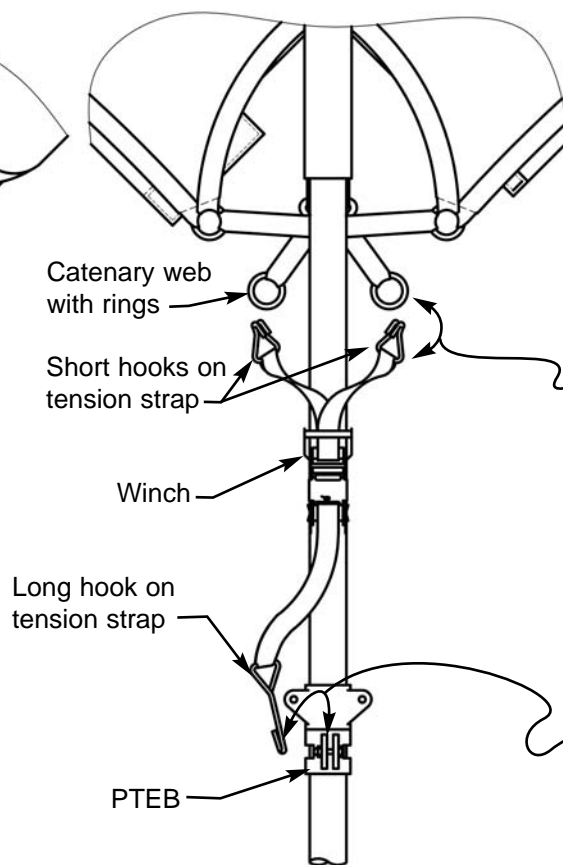


FIGURE 2
INSIDE VIEW

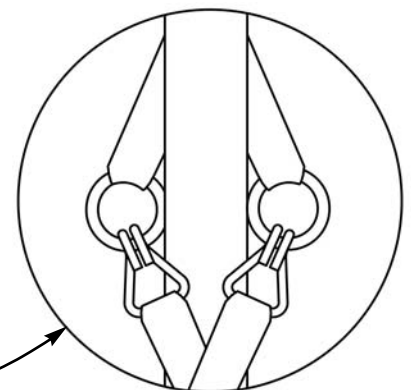


FIGURE 3

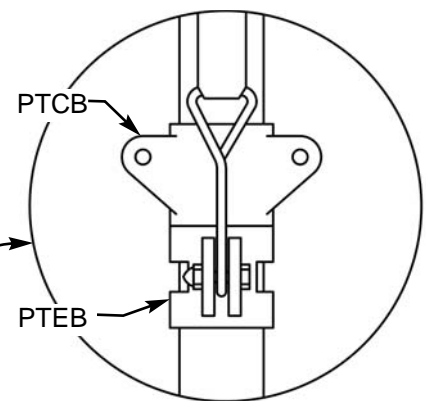


FIGURE 4

Steps:

1. Refer to Standard Fiesta assembly instructions.
2. With top on, pull corners down and pull web over eyebolt. (fig. 1)
3. Place catenary webs with rings through triangular ring as shown. (fig. 1)
4. Place the two short hooks on tension strap into rings as shown. (fig. 2 & 3)
5. Attach long hook on bottom of tension strap to bolt on PTEB as shown. (fig. 2 & 4)
6. When all hooks are fastened, use winch to gradually tension each corner, repeating this process until top is properly tensioned all around.
7. Do not over-tension. Over-tensioning will result in rafter bending.

SALES OFFICES:
1100 BURCH DRIVE
PO BOX 3477
EVANSVILLE, IN 47733 USA



PRODUCTION FACILITIES:
BRADENTON, FL
EVANSVILLE, IN

Quality, Craftsmanship and Service since 1892



Thank you for purchasing an Anchor product. In return, we pledge Quality, Service and Craftsmanship and are available for any questions you may have or assistance you may need.

PHONE NUMBER

812-867-2421

FAX NUMBER

812-867-0547

Anchor products are of superior design and operate best within the parameters of these instructions. It is **IMPERATIVE** that the instructions be carefully read and **COMPLETELY FOLLOWED**. Please read installation instructions before the installation or removal of this product. Installation instructions are available at www.anchorinc.com.

For additional assistance consult: "The IFAI Procedural Handbook For The Safe Installation And Maintenance Of Tentage" and the IFAI "Pullout Capacity Of Tent Stakes", both available from the IFAI Tent Rental Division.

CAUTION:

1. For each installation, the installer is solely responsible for evaluating the site and the proper securing method determined. Some soils require different staking or securing than that provided with the tent. Due to this variety of soil conditions, these are the manufacturer's suggested sequence of installation procedures. Anchor's responsibility is limited to the construction of the tent. We are not responsible for methods that installers may choose to secure the tent to the ground.

2. Inasmuch as the weather is unpredictable, good judgment and common sense must be incorporated within installation guidelines. It is the responsibility of the tent installer/maintainer to determine the severity of the weather, proper time and method of installation and/or erection and disassembly.

This product has been manufactured for use as a temporary structure. For the safety of all occupants, evacuation is recommended if threatening weather occurs, or if there is any doubt concerning the safe use of this product.

3. Proper safety equipment should be used at all times to insure a safe installation and take down. We suggest a careful evaluation be made to determine safety equipment needed, such as hard hats, steel-toe shoes, safety glasses and other as required.

4. Anchor stands behind its products in accordance with its standard Terms and Conditions of sale. A copy of our Terms and Conditions of Sale can be obtained by contacting Anchor at the telephone number and/or address on this document.