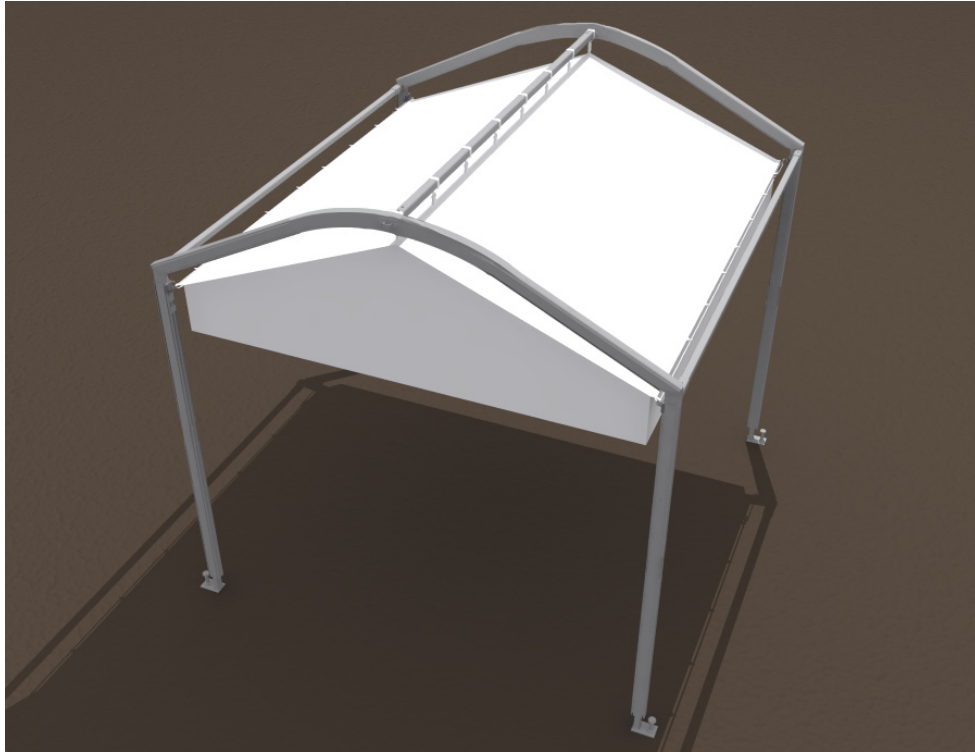


# CURVED BOW MARQUEE LINER INSTALLATION INSTRUCTIONS



**SALES OFFICES:**  
1100 BURCH DRIVE  
PO BOX 3477  
EVANSVILLE, IN 47733 USA



PHONE: 812-867-2421  
FAX: 812-867-0547  
1-800-544-4445  
EMAIL: tents@anchorinc.com  
www.anchorinc.com

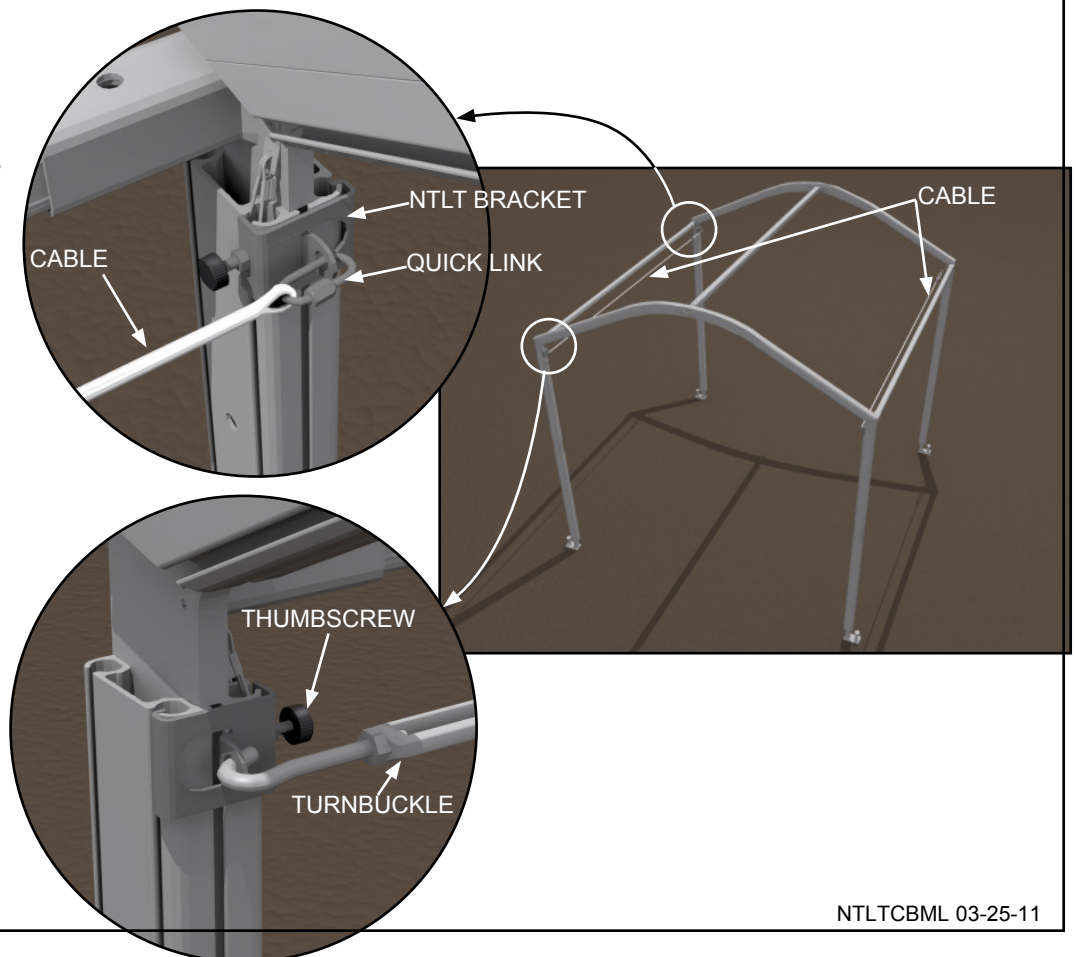
## Step 1

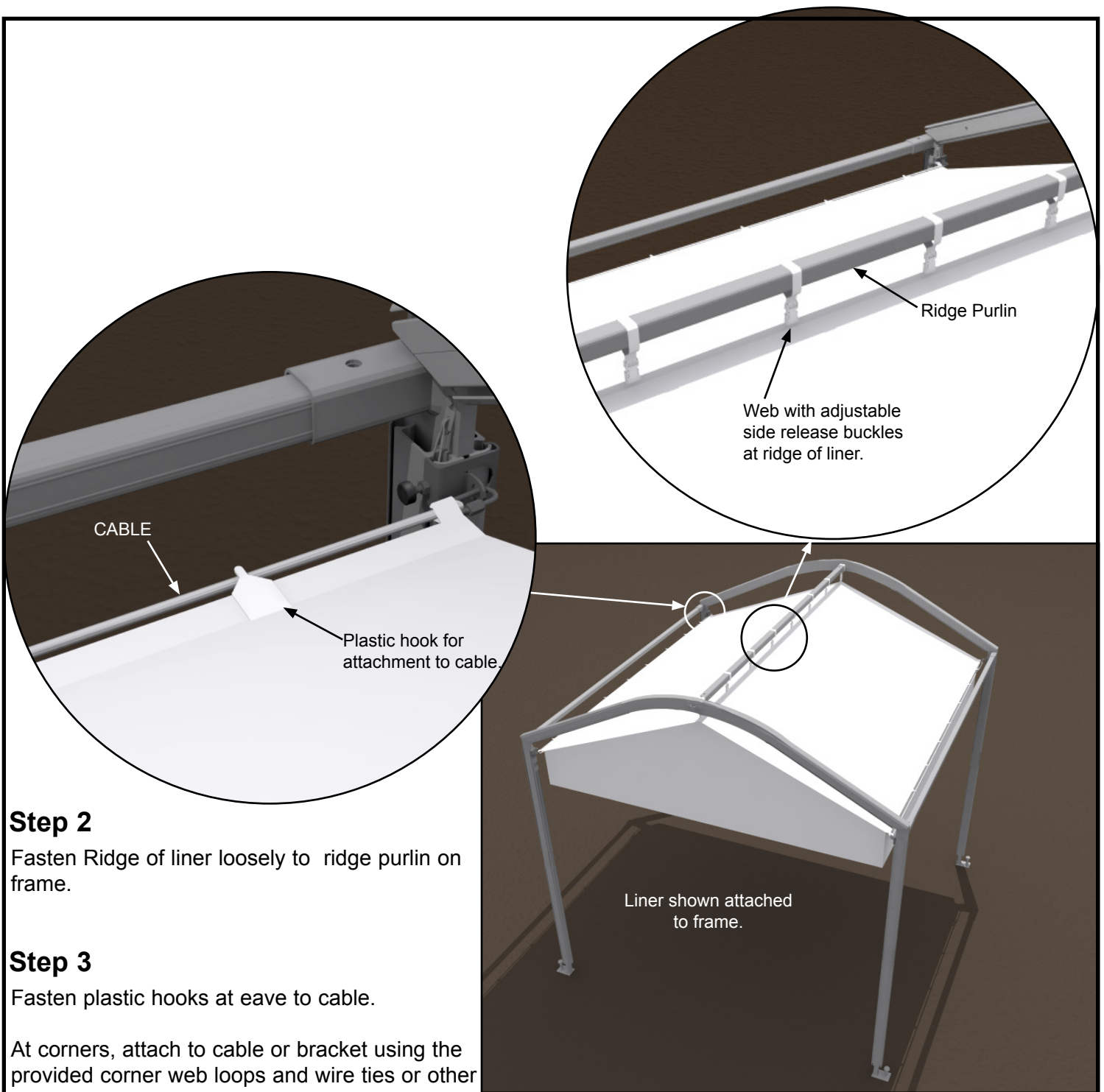
Attach cables to uprights as shown using the NTLT brackets as shown.

Set NTLT bracket as high as possible on upright.

Thumb screw should protrude toward inside of frame.

Tension cable using turnbuckle.





**Step 2**

Fasten Ridge of liner loosely to ridge purlin on frame.

**Step 3**

Fasten plastic hooks at eave to cable.

At corners, attach to cable or bracket using the provided corner web loops and wire ties or other (not provided).

Turnbuckles may be re-adjusted at this point if required.

**Step 4**

Tighten side-release buckles at ridge of liner until liner fits as desired.