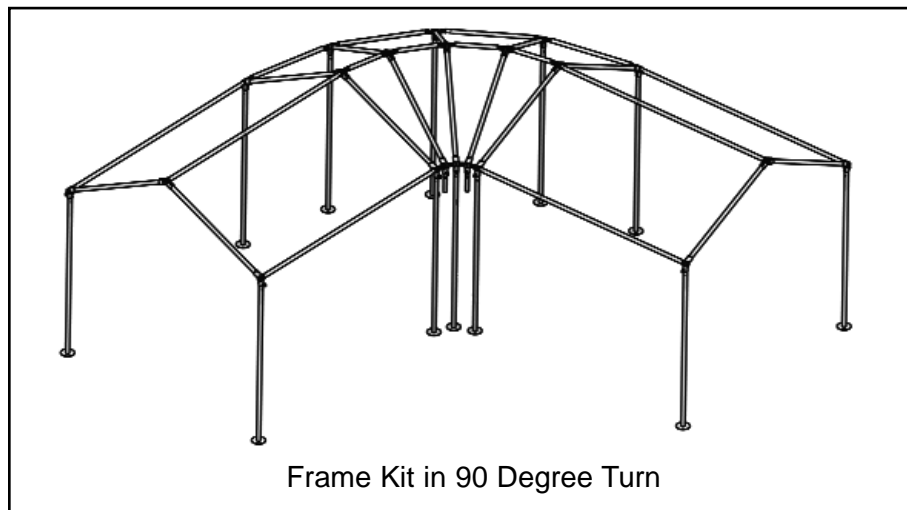
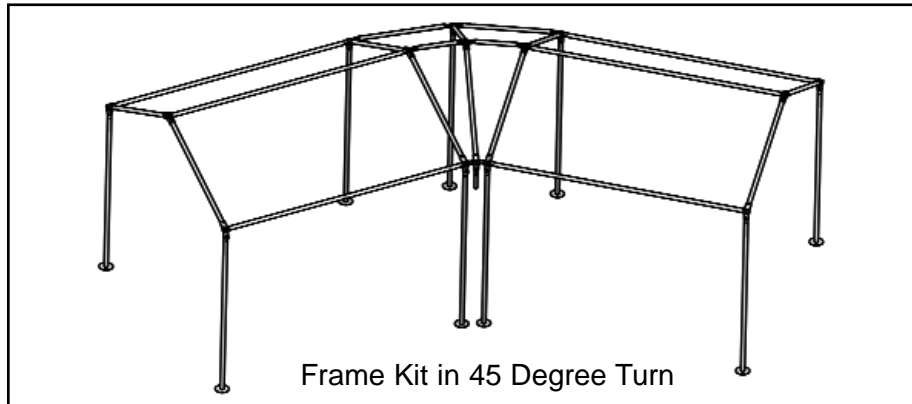


INSTALLATION INSTRUCTIONS



Round Corner Kits for Fiesta Marquee Frames



Quality, Craftsmanship and Service since 1892

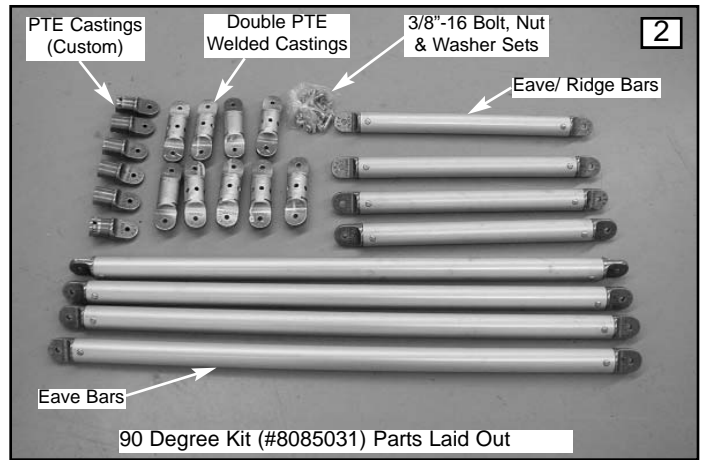
SALES OFFICES:

1100 Burch Drive
P.O. Box 47733
Evansville, IN 47733-3477

Phone: 800 544-4445
Fax: 812-867-0547
E-mail: tents@anchorinc.com
Website: www.anchorinc.com



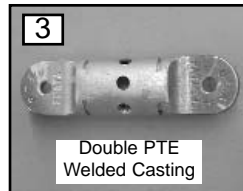
90 Degree Kit (#8085031) Boxed.



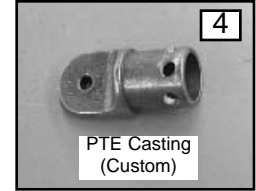
90 Degree Kit (#8085031) Parts Laid Out

The Round Corner Kits are simply adapter kits that allow standard Fiesta Marquee frames to turn corners of 45 or 90 degrees.

The Kits include only the unique parts needed to make these corner turns. The kit assumes the customer either owns or is purchasing all the necessary standard Fiesta Marquee frame parts, including the standard Rafters, Uprights, PTI and PTR Castings used in the corner turn itself, which are not included in the kits.



Double PTE Welded Casting



PTE Casting (Custom)



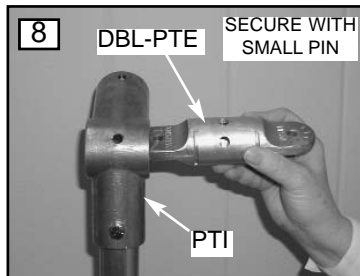
Custom PTE installed and pinned into a PTI at the left side of the inside radius



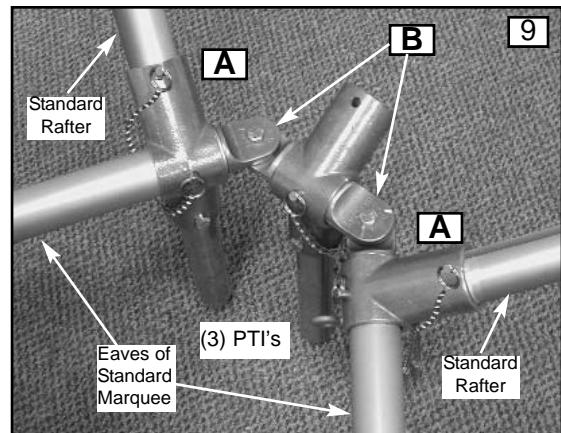
Double PTE Welded Casting, installed and pinned into a PTI



Custom PTE installed and pinned into a PTI at the right side of the inside radius



Installing the Double PTE

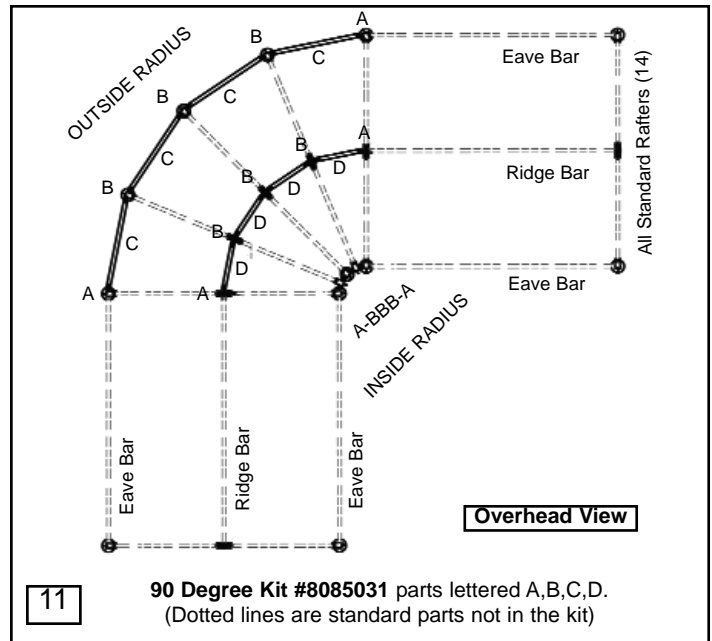
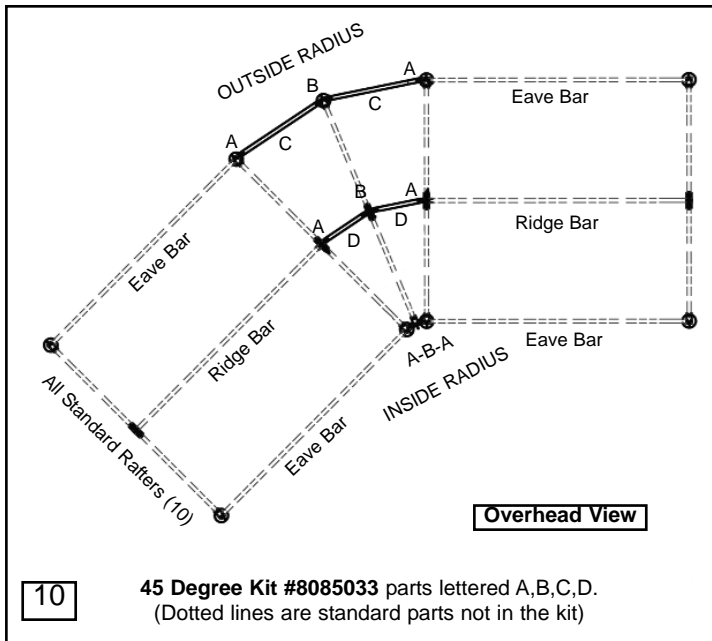


Inside Radius with eyes overlapped and bolted together to form the angled turn of the eave frame

TOOLS REQUIRED:

(Not Provided) Ratchet Wrench w/ 9/16" Socket

COMPONENT DESCRIPTION	DWG LTR	INVENTORY #	FRAME QUANTITIES PER KIT	
			45 Degree Turn Kit # 8085033	90 Degree Turn Kit # 8085031
PTE CASTING (CUSTOM)	A	8085034	6	6
DOUBLE PTE WELDED CASTING	B	8085035	3	9
EAVE BAR	C	varies with size	2	4
EAVE/ RIDGE BAR	D	varies with size	2	4
3/8"-16 x 1 1/2" Hex Hd Cap Screw, Grd 5, zinc		3023220	10	20
3/8"-16 Hex Nut, zinc		3024340	10	20
3/8" Lock Washer, zinc		3025330	10	20



Please notice in the above overhead view of the 45 and 90 degree Fiesta Marquee Round Corner Kits that only the parts lettered and identified here are actually included in this kit. All other parts, including all the rafters, eave bars, ridge bars, PTI's, PTR's and uprights are assumed to be pre-owned or being purchased separately by the customer. **Those standard Fiesta Marquee parts are not included in this kit.** (See Fig.2 for a layout of the parts that are included in the kits.)

INSTALLATION SEQUENCE AND GUIDELINES:

1. Refer to the standard Fiesta Marquee Frame installation instructions and assemble (2) standard Fiesta Marquee units (9' x 10' frame unit). **These units should be built without legs** and be supported by the upright splices at the bottom of the PTI castings at the four corners of each unit. Align (1) unit as required for your installation site. Position the other near the opposite end of the intended radius (**Fig 10 & 11**).
2. Construct the inside radius using additional PTI's with PTE Custom Castings "A" and Double PTE Welded Castings "B" as follows:
 - a. On the standard eave that will lead into the turn, pull the pin that secures the eave bar to the PTI, insert a PTE Custom Casting into the PTI and the end of the eave bar, with the eye end facing the desired radius turn. On the shaft of the PTE Custom Casting choose the pin hole that will position the eye tab horizontal to the ground and replace the pin to re-secure the connection (**Fig.5**). Repeat this process for the other standard unit (**Fig.7**).
 - b. Into a second PTI, insert a Double PTE Welded Casting (see Fig.8), aligning the holes so that the eye ends will be horizontal with the ground, and pin with the small PTI pin. If you are constructing a 45 degree turn, (1) PTI with the Double PTE will be enough. If you are constructing the 90 degree turn, you will need to assemble (3) of these (**Fig10 & 11**).
 - c. Overlap the eye fittings of the inside radius casting and bolt together, using the 3/8" -16 x 1 1/2" Hex Hd Cap Screws with Nut and washer (**Fig.9**).
3. Into the center PTI, Install a standard Fiesta Marquee rafter and pin it. The end PTI's of the standard units should already have rafters installed, from Step #1, above.
4. At the upper end of the rafter installed in Step #3, install a standard PTR (see standard Fiesta Marquee Instructions). Into this PTR, install a Double PTE Welded Casting in the same way as it was installed into the PTI (**Fig.8**). Choose the Pin hole that will result in the eye fittings being horizontal to the ground.
5. Into the PTR's of the ridge at ends of each standard Marquee unit, remove the small pin, install PTE Custom Castings and replace the pin, with the eyes horizontal to the ground.
6. Using (2) Eave/Ridge Bars "D", connect the Double PTE in the ridge PTR of the radius rafters to the PTE Custom Castings in the PTR's of each standard Marquee unit. For 45 degree angles, adjust the position of the standard units as necessary to overlap the PTE's and bolt with a 3/8" -16 x 1 1/2" Hex Hd Cap Screw with Nut and Washer. If you are installing a 90 degree turn, repeat steps 3 through 5 on (2) additional radius rafter assemblies, interconnecting each rafter with Eave/Ridge Bars "D".
7. On the opposite side of the ridge, install additional standard rafters extending toward the outside radius of the angled framing.
8. On the opposite eave, construct the outside radius in the same manner as the inside radius (See step # 2, above), but develop the needed spacing by installing an Eave Bar "C" between the eyes of the Custom PTE's "A" of the standard units and the Double PTE's "B" of the radius rafter assemblies, and also between the Double PTE's themselves of the radius rafter assemblies.
9. Install guy ropes to the eave fittings of the entire frame, but leave them slack, so as not to impede the later lifting of the frame.
10. Refer to the standard Fiesta Marquee Instructions and install the fabric tops to all units described above.
11. Lift the frames and insert legs under all PTI's along the eave line of the standard units and the **middle** PTI of the radius sections.
12. Refer to the standard Fiesta Marquee Instructions and tighten all guy ropes to secure the unit.



Thank you for purchasing an Anchor product. In return, we pledge Quality, Service and Craftsmanship and are available for any questions you may have or assistance you may need.

PHONE NUMBER

812-867-2421

FAX NUMBER

812-867-0547

Anchor products are of superior design and operate best within the parameters of these instructions. It is **IMPERATIVE** that the instructions be carefully read and **COMPLETELY FOLLOWED**. Please read installation instructions before the installation or removal of this product. Installation instructions are also available at: www.anchorinc.com.

CAUTION

1. For each installation, the installer is solely responsible for evaluation of the site and the proper securing method determined. Some soils require different staking or securing than that provided with the tent. Due to this variety of soil conditions, these are the manufacturer's suggested sequence of installation procedures. Anchor's responsibility is limited to the construction of the tent. We are not responsible for methods that installers may choose to secure the tent to the ground.
2. Inasmuch as the weather is unpredictable, good judgment and common sense must be incorporated within installation guidelines. It is the responsibility of the tent installer/maintainer to determine the severity of the weather, proper time and method of installation and /or erection and disassembly. This product has been manufactured for use as a temporary structure. For the safety of all occupants, evacuation is recommended if threatening weather occurs, or if there is any doubt concerning the safe use of this product.
3. Proper safety equipment should be used at all times to ensure a safe installation and take down. We suggest a careful examination be made to determine safety equipment needed, such as hard hats, steel toe shoes, safety glasses and other as required.
4. Anchor stands behind its products in accordance with its standard Terms and Conditions of sale. A copy of our Terms and Conditions of Sale can be obtained by contacting Anchor at the telephone number, address on this document.